

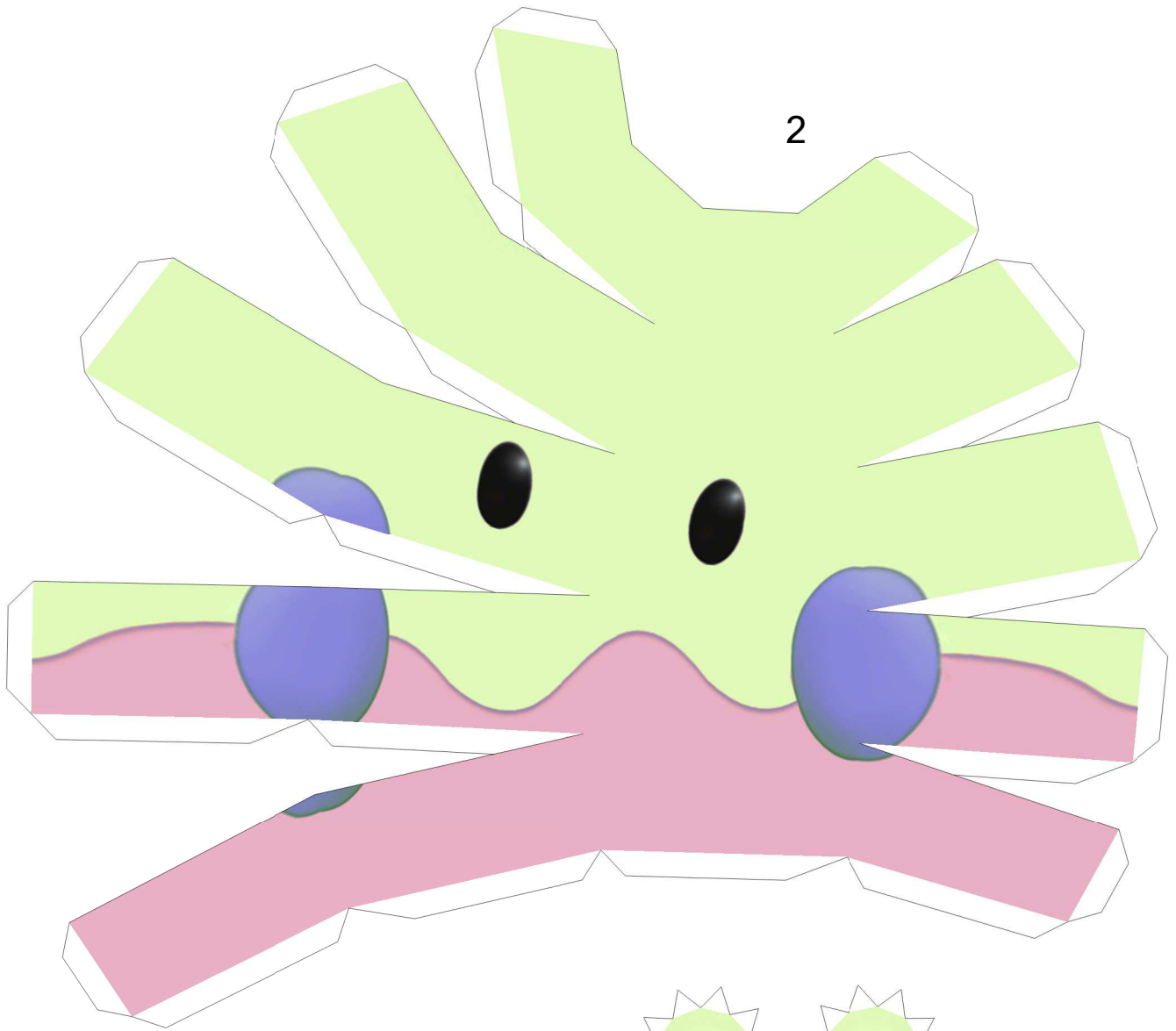


Goomy

By Brandon

Build by LuIS

Paper Pokés
www.pokemonpapercraft.net



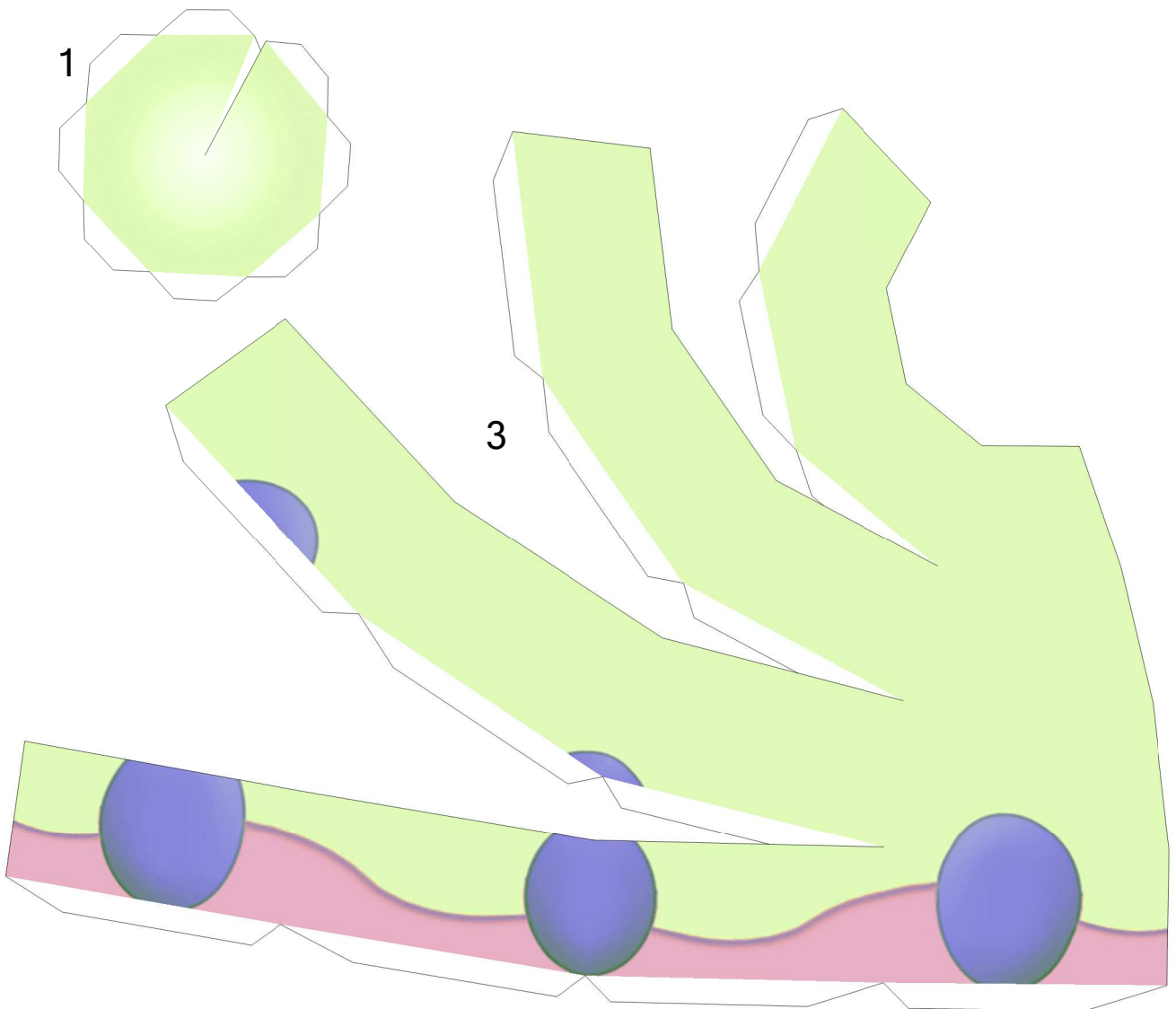
2

Start at the top of the head and glue the front and back to it, starting by the front part. Glue the antennae to the body before closing.

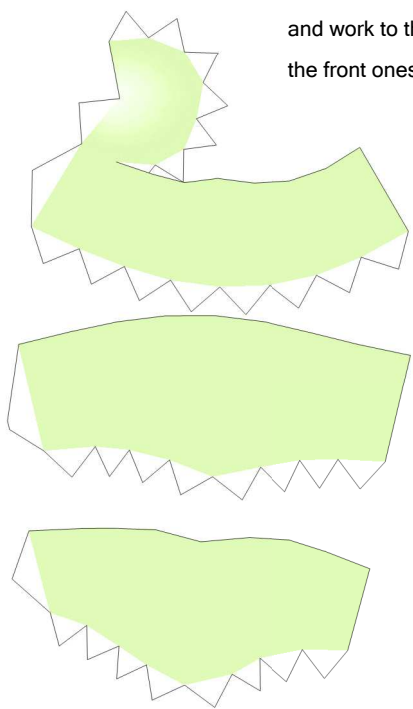
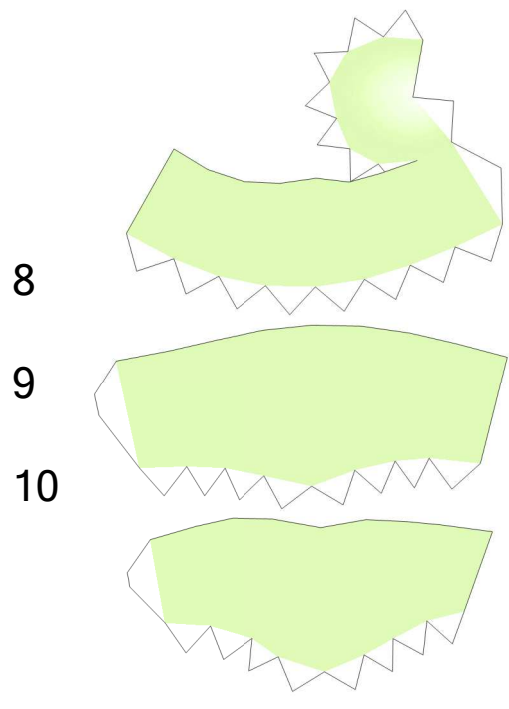
4-5

6-7

14

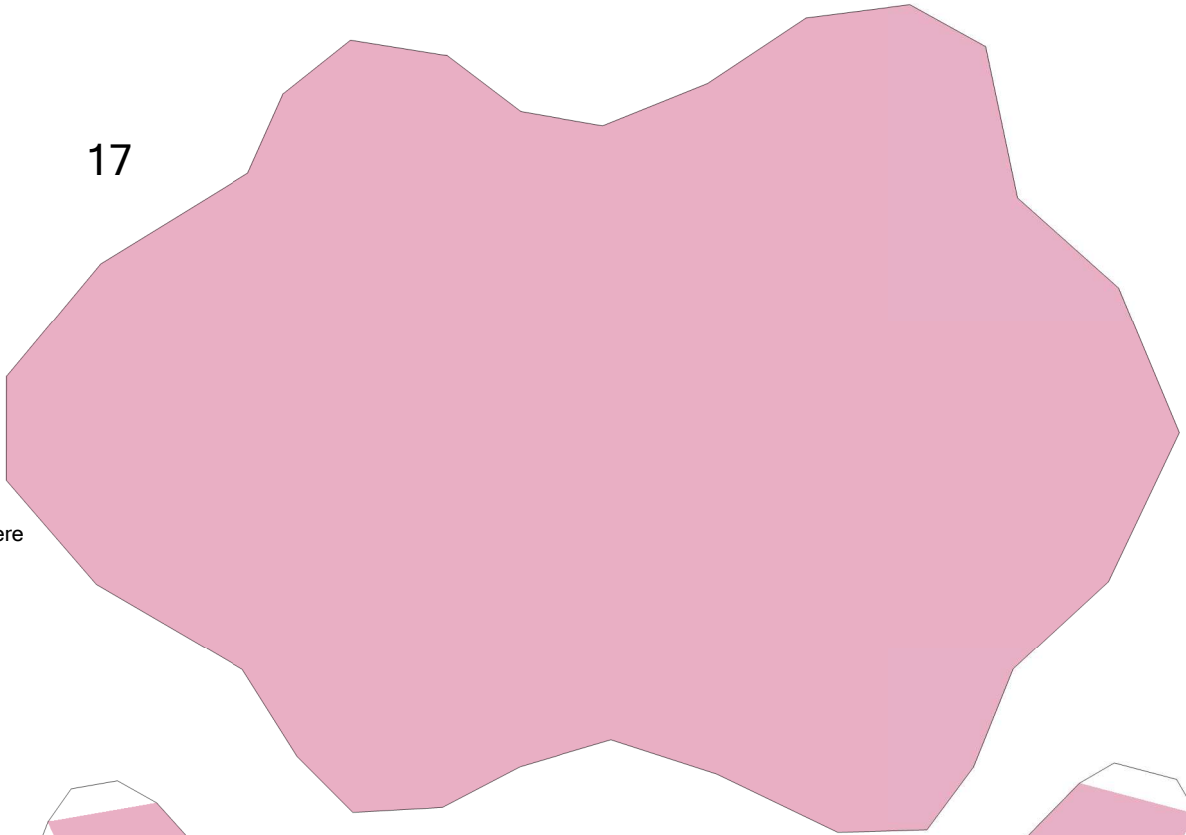


Start the antennae at the top and work to the bottom. Glue the front ones before.

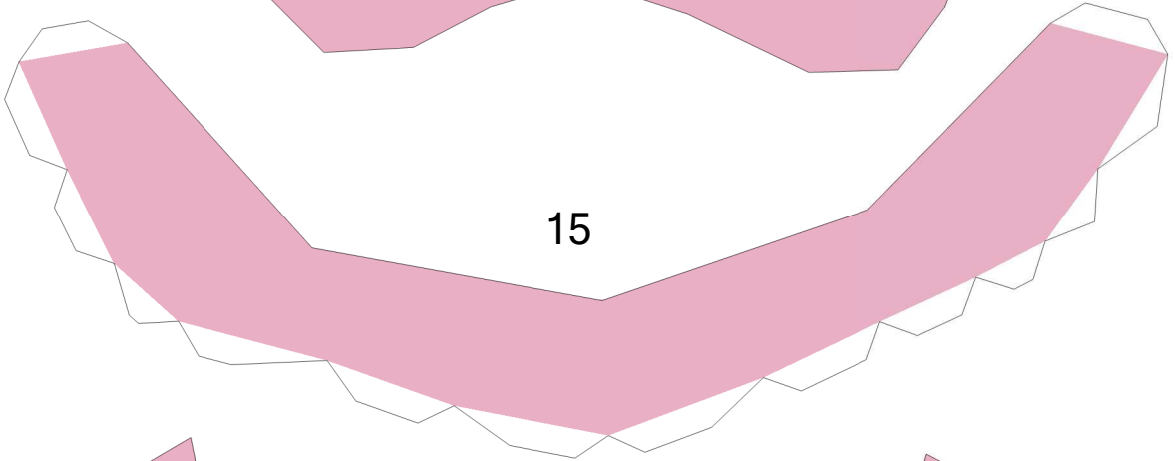


17

^
Close here



15



16

